

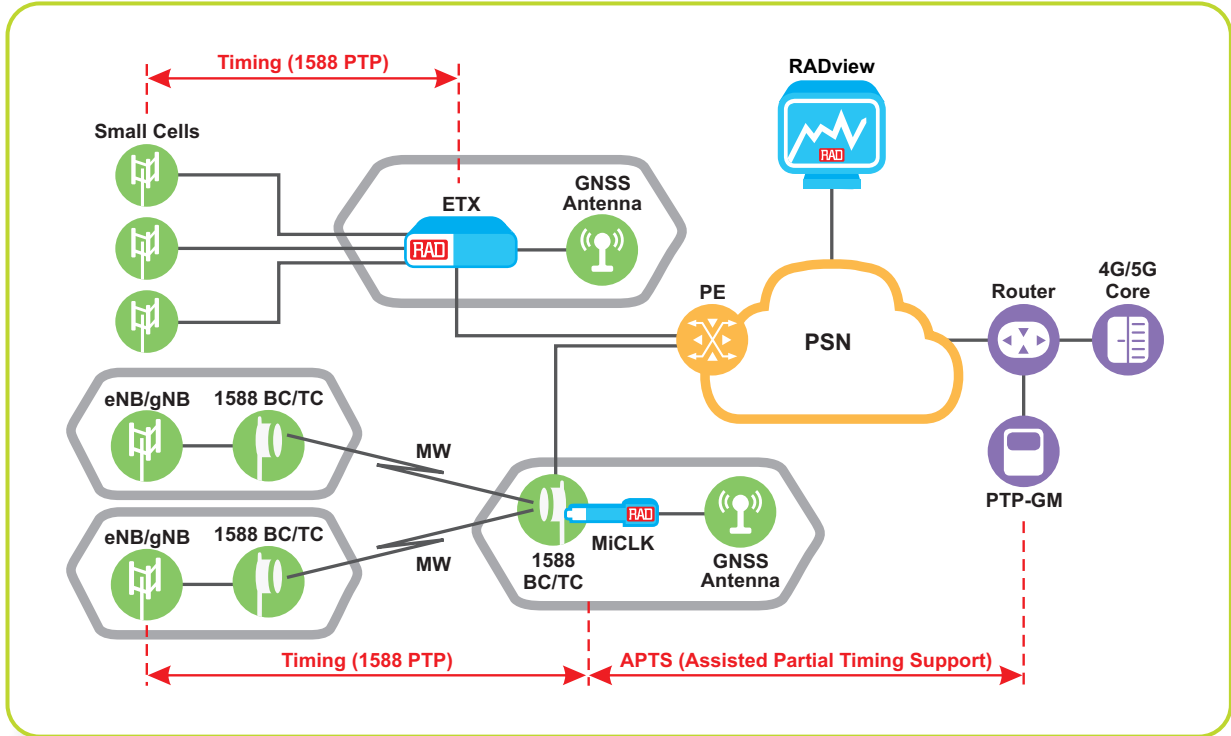


Timing Synchronization for Mobile Networks

Application Brochure



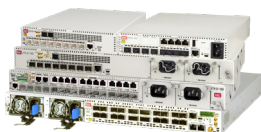
Mobile Services



Your Benefits:

- Addressing stringent timing requirements (frequency/phase) for LTE/LTE-A/5G macro and small cells with a fully featured PTP Grandmaster:
 - ETX-2 in a local POP/hub
 - MiCLK unique SFP plugged into an aggregation switch
- Cost efficiency by bringing PTP Grandmaster closer to the cell site
- Built-in GNSS receiver
- Full network coverage, even in underground and indoor installations
- No need to install GNSS antenna on every cell site; avoid spoofing and jamming
- Fits existing installed base – no need for CapEx investments in retrofitting network with 1588 BC/TC support across the entire path
- Robust GNSS (GPS/GLONASS) backup – time holdover for 72 hours, using Sync-E or 1588 frequency references from the network (Assisted Partial Timing Support)

Products Included in this Solution:



ETX-2/ETX-2i
Carrier Ethernet Demarcation



MiCLK
1588 Grandmaster on an SFP



RADview
Management and Domain Orchestration

