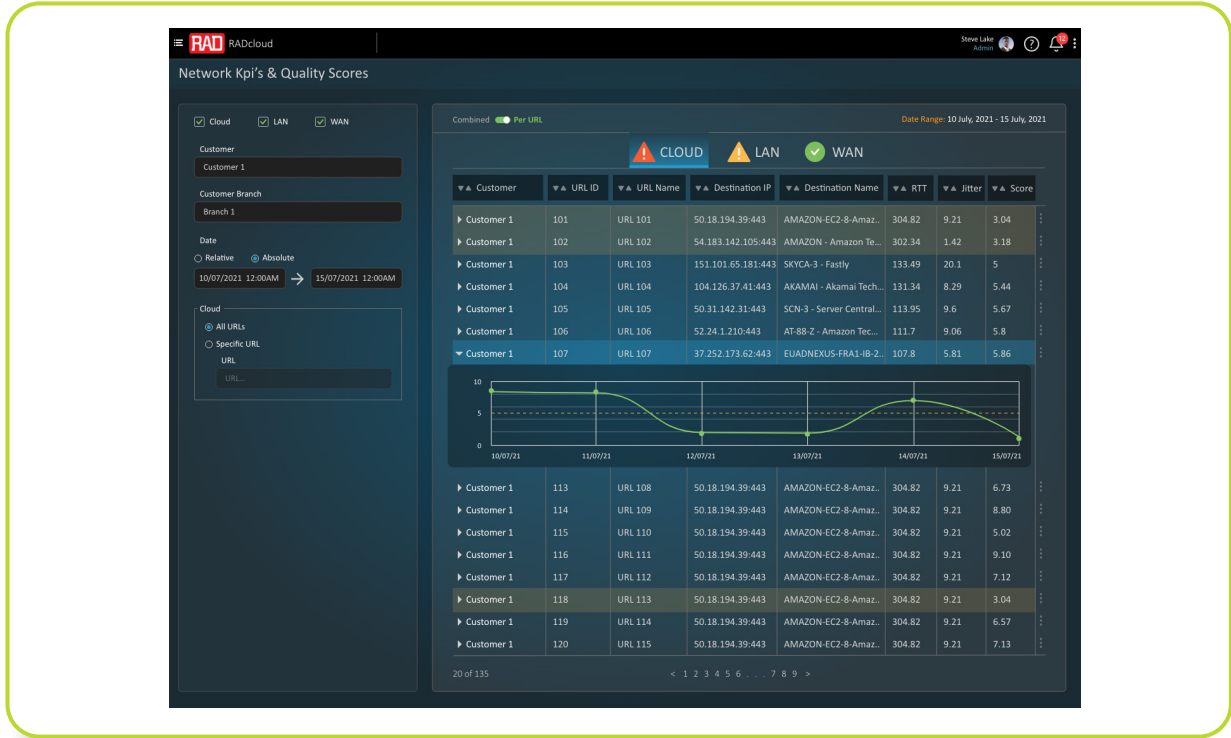




RADinsight PM: LAN to Cloud Performance Monitoring

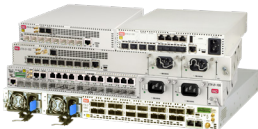
Application Brochure



Your Benefits:

- At-a-glance views of problem areas affecting service quality, across the entire traffic path: Customer LANs, service provider's WAN and the internet/cloud
- Replaces long, service-affecting troubleshooting procedures and saves on call center costs, truck rolls and unnecessary CPE replacements
- Applies to existing EAD installed base; no hardware or software upgrade needed
- Access to contextual, meaningful insights and history data; can be used by CSP personnel or as a business-customer self-service portal
- Subscription-based cloud service

Products Included in this Solution:



ETX-2/ETX-2i
1G/10G/100G Carrier Ethernet Demarcation



ETX-203
Carrier Ethernet Demarcation



RADinsight
LAN to Cloud Performance Monitoring

